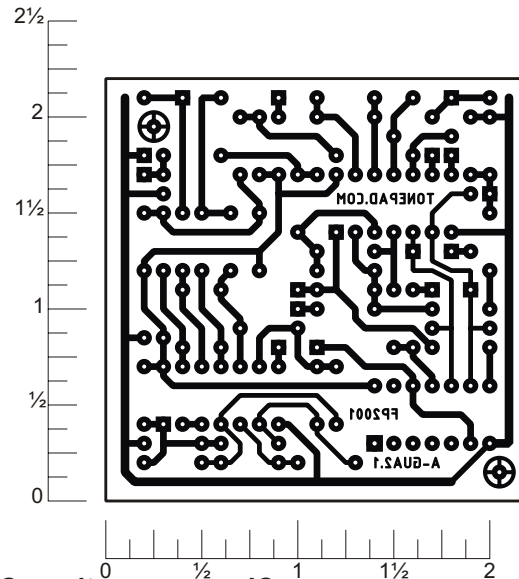
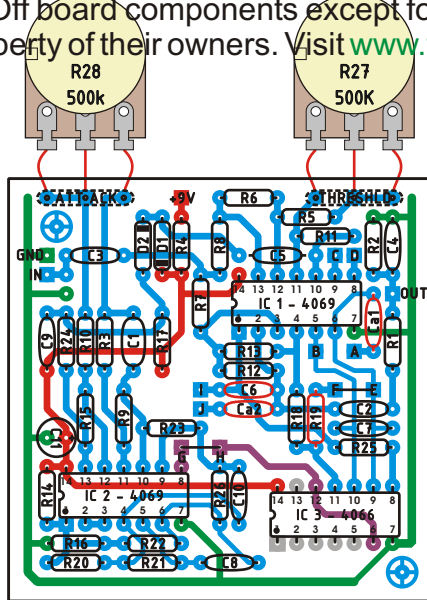


# A-GUA FILTER

Rev.1.Mar.8.2007

The MXR Envelope Filter circuit can be built on this board. Pads A-J are for mods, the layout is populated as the stock MXR-EF, you'll need to follow the instructions and schematic to perform the mods. Off board components except for the potentiometers are not shown on the layout. Trademarks are property of their owners. Visit [www.tonepad.com](http://www.tonepad.com) for more!



## Parts List

### Resistors

R1 - 3k6	R12 - 200k
R2 - 200k	R13 - 240k
R3 - 10M	R14 - 62k
R4 - 3k	R15 - 10M
R5 - 10k	R16 - 100k
R6 - 5.1M	R17 - 1M
R7 - 200k	R18 - 47k
R8 - 1M	R19 - 200k
R9 - 22M	R20 - 100k
R10 - 10k	R21 - 100k
R11 - 470k	R22 - 47k

### Pots

R27 - 500k Lin
R28 - 500k Lin

### Diodes

D1 - 1N914
D2 - 1N914

### Capacitors

C1 - 0.1uF
C2 - 0.05uF
C3 - 0.05uF
C4 - 0.1uF
C5 - 0.05uF
C6 - 0.001uF
C7 - 0.001uF
C8 - 100pF
C9 - 0.05uF
C10 - 10pF
C11 - 47uF

### ICs

IC1 - CD4069
IC2 - CD4069
IC3 - CD4066

### Emphasis control:

Change R19 to 47k and add a 500k pot between F&E wired as variable resistor.

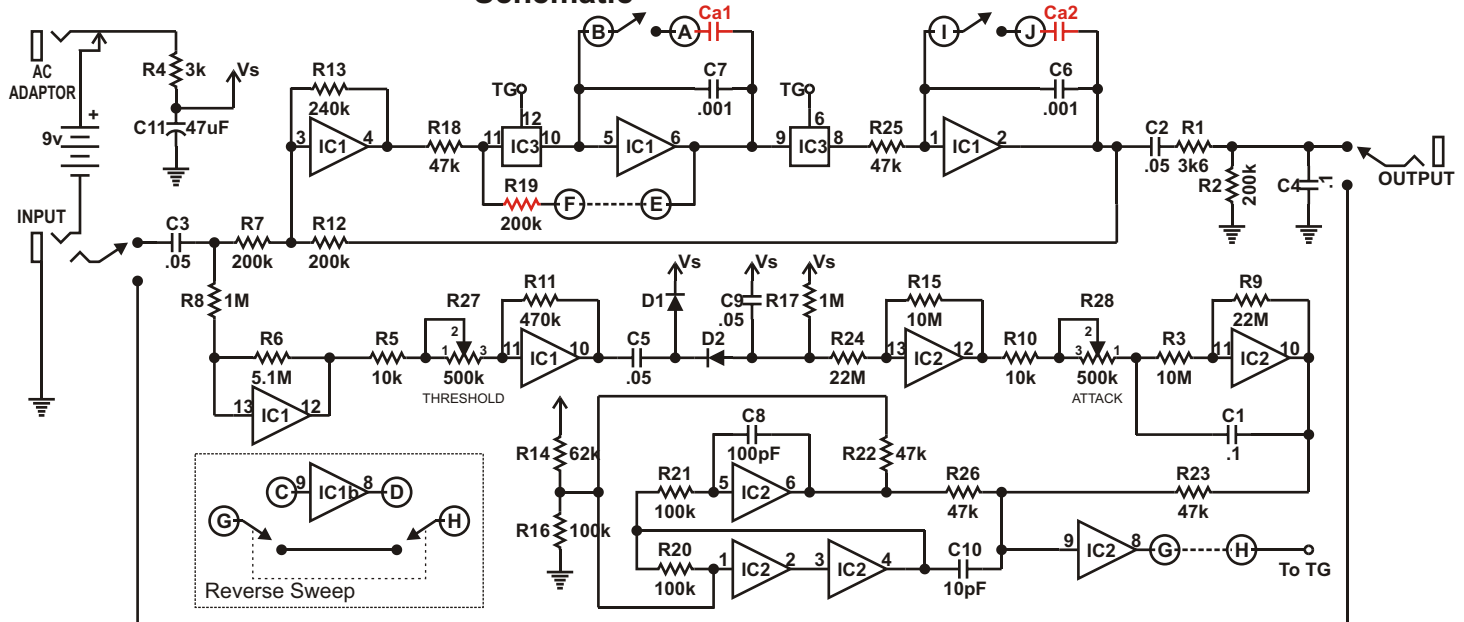
### Reverse Sweep:

Add a DPDT switch wired as detailed in the 'reverse sweep' schematic below.

### Filter range mod:

Add capacitor Ca1 and Ca2 (470pF), change C7 and C6 to 560pF and add a DPDT switch between A&B and I&J.

## Schematic



Layout and presentation by Francisco Peña 2001 - 2007®.  
All rights reserved. Authorization for personal use only.  
any commercial use is forbidden.  
Permission for posting/serving limited to  
<http://www.tonepad.com>  
Permission refused for posting from other sites.